

- 1
- 2
- 3
- 4
- 5
- 6
- 7
- 8
- 9
- 10
- 11
- 12
- 13
- 14
- 15

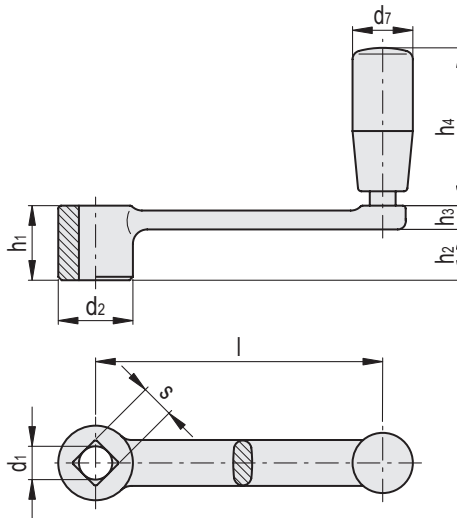
**MATERIAL**

Cast AISI CF-8 stainless steel, sandblasted matte finish.

**STANDARD EXECUTION**

Handle I.280 (see page 394) in Duroplast with AISI 304 stainless steel revolving pin.

- **GN 269-B:** H9 reamed hole.
- **GN 269-V:** H11 square hole.



**Conversion Table**  
1 mm = 0.039 inch

mm	inch
80	3.15
100	3.94
125	4.92
160	6.30
200	7.87

Code	Description	l	d1 H9	sH11	d2	h1	h2	h3	h4	d7	⚖
GN.56851	GN 269-80-B10	80	10	-	22	22	15.4	6.6	45	18	120
GN.56852	GN 269-80-V10	80	-	10	22	22	15.4	6.6	45	18	123
GN.56856	GN 269-100-B12	100	12	-	26	26	17.7	8.3	55	21	200
GN.56857	GN 269-100-V12	100	-	12	26	26	17.7	8.3	55	21	187
GN.56861	GN 269-125-B14	125	14	-	28	28	18.8	9.2	71	23	300
GN.56862	GN 269-125-V14	125	-	14	28	28	18.8	9.2	71	23	320
GN.56866	GN 269-160-B17	160	17	-	32	32	22.6	9.4	71	23	380
GN.56867	GN 269-160-V17	160	-	17	32	32	22.6	9.4	71	23	370
GN.56871	GN 269-200-B19	200	19	-	38	38	28	9.4	71	23	384
GN.56872	GN 269-200-V19	200	-	19	38	38	28	9.4	71	23	374